

Fuji IX^{GP} **EXTRA** & G-COAT PLUS

THE MICRO LAMINATION TECHNIQUE

GC

Fuji IX GP EXTRA optimised by Micro Lamination

Micro Lamination is a simple technique that has evolved as high technology coating materials have developed. Micro Lamination means you can now toughen and aesthetically enhance your Fuji IX GP EXTRA restorations.



Dr. J. Lucas

Fast application

Micro Lamination is achieved by applying a layer of G-COAT PLUS to the surface of a Fuji IX GP EXTRA restoration. G-COAT PLUS is a tough, nano-filled, self adhesive coating that chemically bonds to Fuji IX GP EXTRA and surrounding tooth surfaces. This 40 micron thick lamination will markedly increase the fracture toughness and wear resistance of the Fuji IX GP EXTRA restoration.

Superb aesthetics

Achieve translucency, high gloss and surface smoothness never before seen with glass ionomer based restorations.

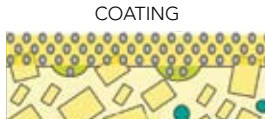
SMART characteristics

Fluoride and strontium are released to strengthen and protect surrounding surfaces. Then, over time, environmental calcium, phosphate and fluoride diffuse into the glass ionomer matrix to further strengthen and recharge the Fuji IX GP EXTRA restoration.

Fuji IX GP EXTRA optimised by Micro Lamination



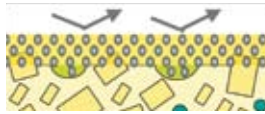
1. Glass ionomer cement



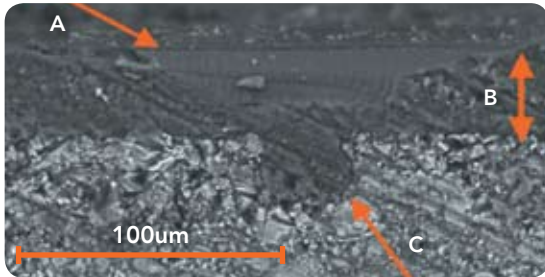
3. G-COAT PLUS bonds to the surface and fills voids



2. Mechanical stress concentrates on surface voids leading to crack propagation



4. Mechanical stress is dispersed by the toughened laminate layer



A – G-COAT PLUS B – 40 micron film thickness

C – Infiltration and chemical bonding of G-COAT PLUS to Fuji IX GP EXTRA

Clinical Performance

G-COAT PLUS further enhances the fracture toughness, wear resistance and clinical performance of Fuji IX GP EXTRA, which is ideally suited to restoration of initial lesions in both primary and permanent dentition.

Zero shrinkage

Fuji IX GP EXTRA is a water based cement that retains a perfect balance both during and after placement, causing no shrinkage or shrinkage stress.

Interface stability, no sensitivity

Water tolerance during placement and strong chemical bonding provide consistency of seal with no sensitivity. Fuji IX GP EXTRA also has excellent interface stability to provide longevity of seal. This is due to its resistance to water degradation at the adhesive interface and a coefficient of thermal expansion which matches tooth structure.

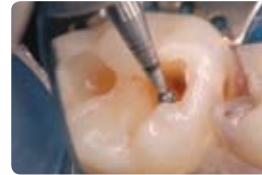
Fuji IX GP EXTRA optimised by Micro Lamination

Simple placement technique

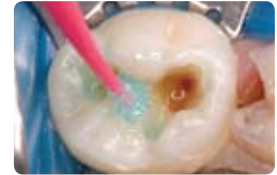
Because Fuji IX GP EXTRA is both an exceptional adhesive and a simple to handle restorative, the placement and contouring of restorations couldn't be easier! One single application of G-COAT PLUS completes the procedure.

Technique tips for optimum clinical results

- Ensure a clean, caries-free DEJ.
- For teeth with deep lesions and a symptomless pulp it is suggested to leave softened dentine on the cavity floor rather than risk pulpal exposure.
- CAVITY CONDITIONER removes surface debris without opening dentine tubules and prepares the cavity surface for chemical bonding.
- After washing off the conditioner, gently dry without desiccating the tooth.
- Apply Fuji IX GP EXTRA immediately following mixing. The free-flowing consistency ensures intimate contact between cement and cavity.
- Apply one layer of G-COAT PLUS and immediately light cure. Avoid multiple layers.
- Surrounding enamel surfaces can be etched and G-COAT PLUS extended beyond the margins of the restoration should additional protection be desired.



1. Cavity preparation



2. Apply conditioner for 10 secs



3. Place Fuji IX GP EXTRA



4. Contour the surface



5. Apply G-COAT PLUS



6. Finished restoration

Fuji IX GP EXTRA

Box of 50 capsules

Shades: A2, A3 and A3.5



G-COAT PLUS

Contains:

1x 4ml bottle of G-COAT PLUS

50x micro-tips

1x micro-tip applicator

20x disposable dispensing dishes



GC Asia Dental Pte Ltd

Changi Logistics Centre 19 Loyang Way #06-27 Singapore 508724

Tel +65 6546 7588 Fax +65 6546 7577 www.gcasia.info

s F9XGCoat MLam 03/09